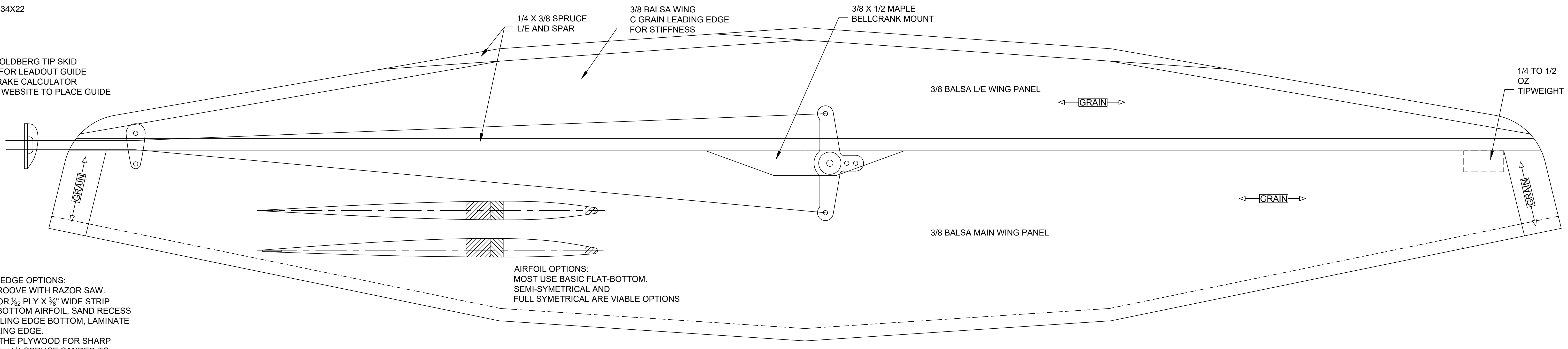


DUBRO / GOLDBERG TIP SKID
MODIFIED FOR LEADOUT GUIDE
USE LINE RAKE CALCULATOR
ON NCLRA WEBSITE TO PLACE GUIDE

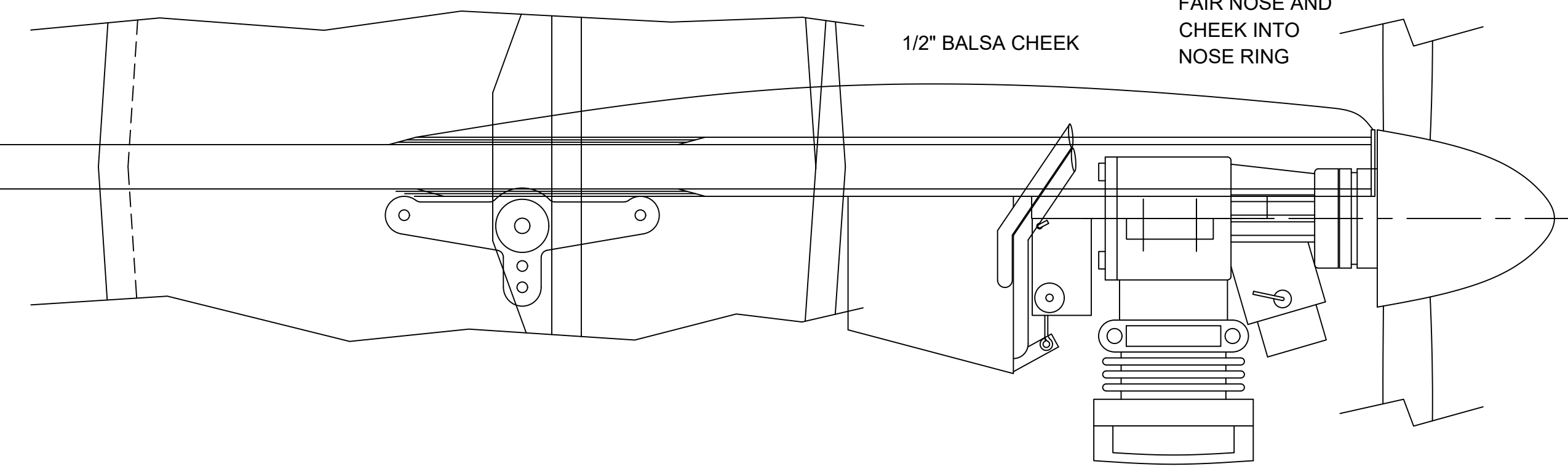
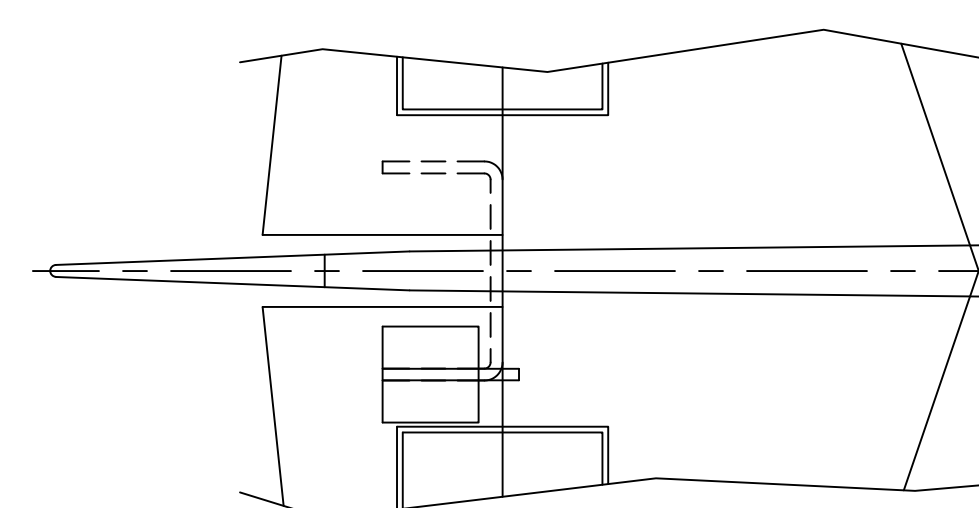
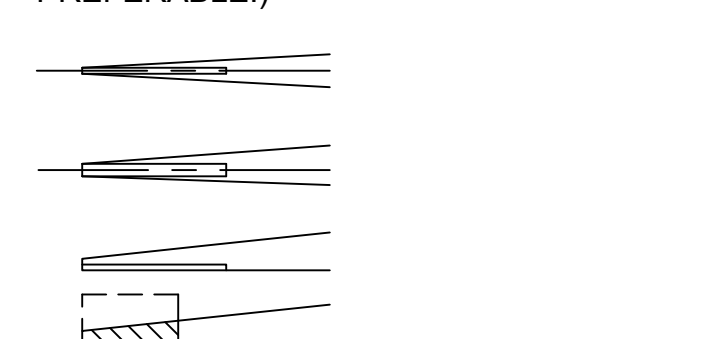
TRAILING EDGE OPTIONS:
CARVE GROOVE WITH RAZOR SAW.
INLAY 1/64 OR 1/32 PLY X 3/16" WIDE STRIP.
ON FLAT BOTTOM AIRFOIL, SAND RECESS
INTO TRAILING EDGE BOTTOM, LAMINATE
PLY TRAILING EDGE.
SAND TO THE PLYWOOD FOR SHARP
EDGE. 1/8 x 1/4 SPRUCE SANDED TO
SHAPE IS ALSO COMMONLY USED.
STRIP CAN BE MADE FROM 3 PLYS OF 5oz
GLASS OR CARBON CLOTH, LAYED UP ON
FLAT SURFACE. (VACUUM BAGGED
PREFERABLE.)

1/4 X 3/8 SPRUCE
L/E AND SPAR
3/8 Balsa WING
C GRAIN LEADING EDGE
FOR STIFFNESS
3/8 X 1/2 MAPLE
BELLCRANK MOUNT

1/4 TO 1/2
OZ
TIPWEIGHT



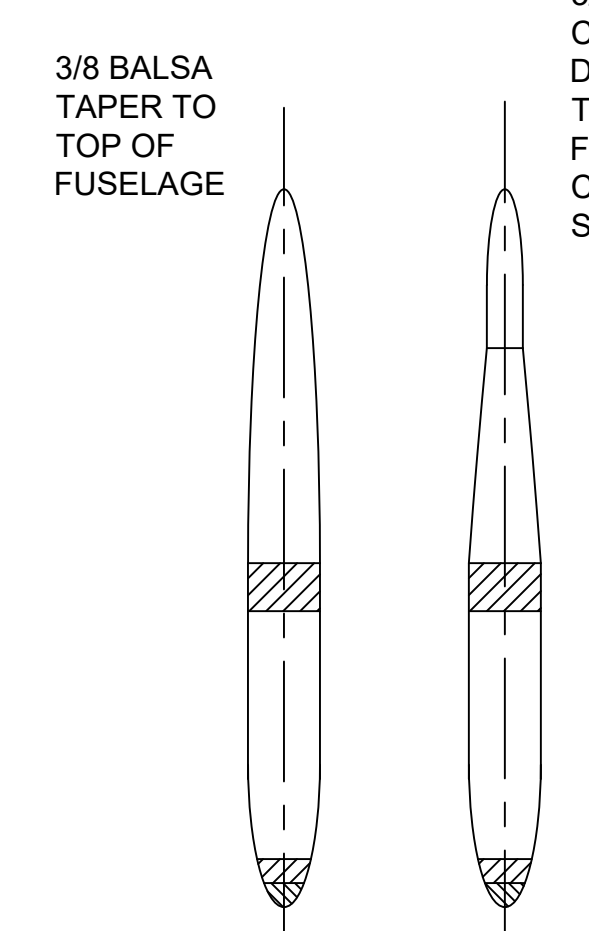
AIRFOIL OPTIONS:
MOST USE BASIC FLAT-BOTTOM.
SEMI-SYMETRICAL AND
FULL SYMETRICAL ARE VIABLE OPTIONS



3/16 2024 ALUM
MOUNT PLATE

1/8 BASS OR
1/16 Balsa - 1/32 PLY -
1/16 Balsa SANDWICH
FIN + RUDDER

3/16 Balsa
CANOPY TO
DASHED LINE
TAPER
FUSELAGE INTO
CANOPY
SECTION



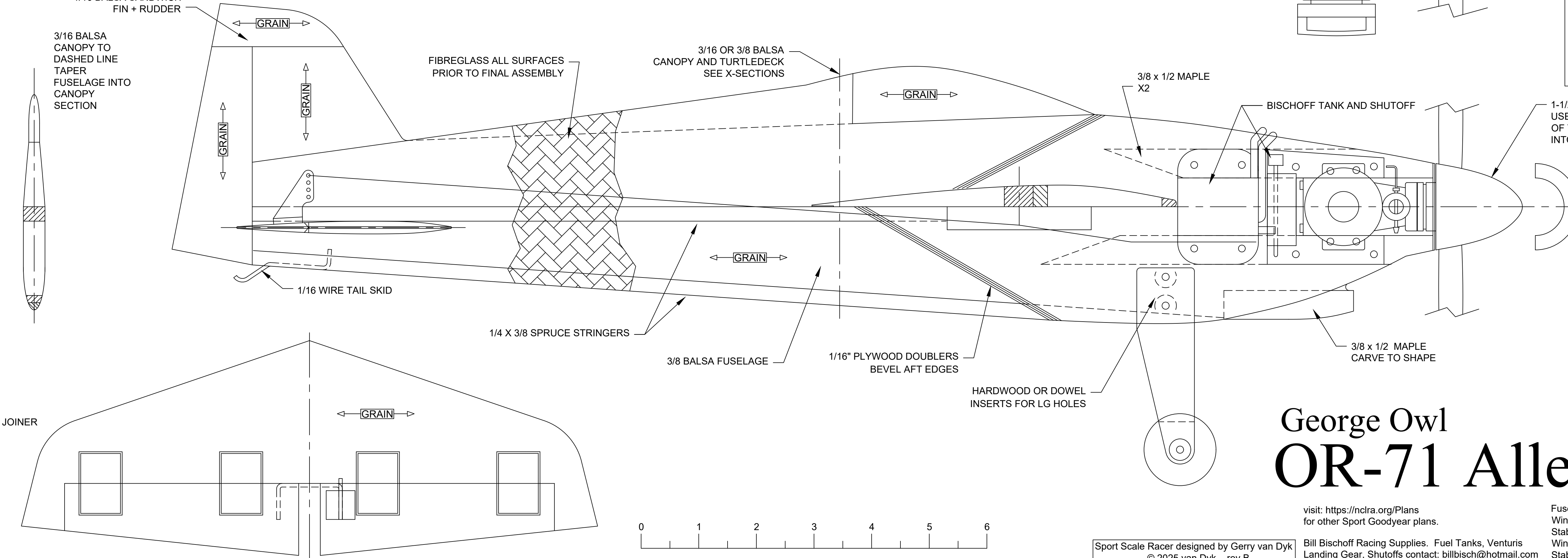
FIBREGLASS ALL SURFACES
PRIOR TO FINAL ASSEMBLY

3/16 OR 3/8 Balsa
CANOPY AND TURTLEDECK
SEE X-SECTIONS

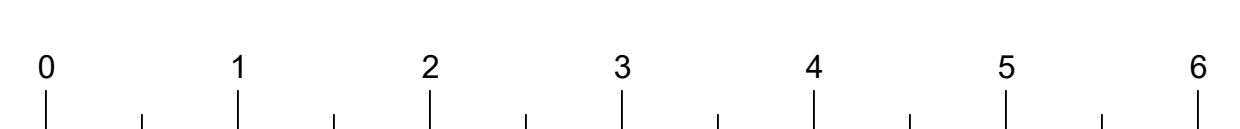
3/8 x 1/2 MAPLE
X2

1-1/2 SPINNER SHOWN
USE SPINNER OR SPINNER NUT
OF YOUR CHOICE AND FAIR NOSE
INTO IT

1-1/2" NOSE RING
1/32 PLY TO MATCH
SPINNER



1/2" PLY STAB CORE
CUT OUT FOR HINGES AND JOINER
FACE WITH 3/32" Balsa
SAND TO AIRFOIL



George Owl OR-71 Alley Cat

4

2005

visit: <https://nclra.org/Plans>
for other Sport Goodyear plans.

Fuselage = 21.5"
Wing Span = 30.5"
Stab Span = 10.0"
Wing Area = 140 in sq
Stab Area = 25.6 in sq

Sport Scale Racer designed by Gerry van Dyk
© 2025 van Dyk rev B

Bill Bischoff Racing Supplies. Fuel Tanks, Venturis
Landing Gear, Shutoffs contact: billbisch@hotmail.com